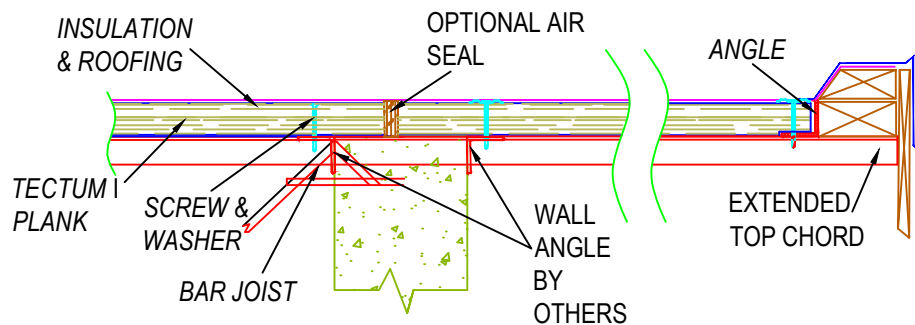


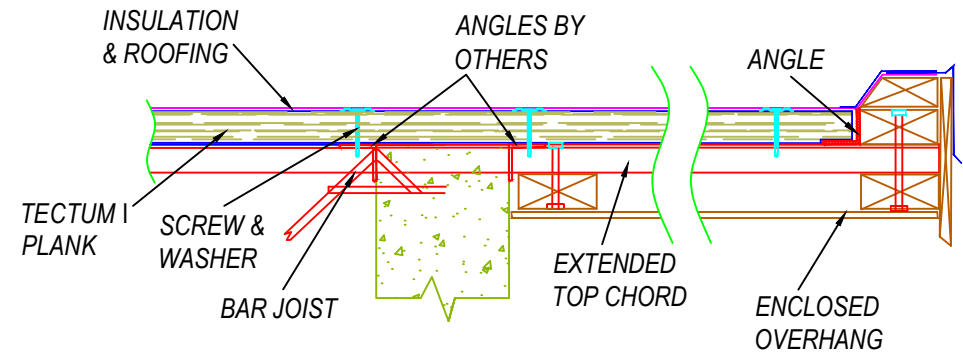
TECTUM I OVERHANG DETAIL

JOIST RIGHT ANGLE TO WALL



NOTE: PANEL CAN BE SCREWED TO MASONRY WALL INSTEAD OF ANGLE. IT IS NOT PRACTICAL TO SCREW THROUGH A PLATE INTO MASONRY.

SEAL REQUIRED FOR SWIMMING POOLS, ICE RINKS, ETC.



NOTE: PANEL CAN BE SCREWED TO MASONRY WALL INSTEAD OF ANGLE. IT IS NOT PRACTICAL TO SCREW THROUGH A PLATE INTO MASONRY.

1 TECTUM I OVERHANG DETAIL
Scale: N.T.S.

These drawings show typical conditions in which the Armstrong product depicted is installed. They are not a substitute for an architect's or engineer's plan and do not reflect the unique requirements of local building codes, laws, statutes, ordinances, rules and regulations (Legal Requirements) that may be applicable for a particular installation. Armstrong does not warrant, and assumes no liability for the accuracy or completeness of the drawings for a particular installation or their fitness for a particular purpose. The user is advised to consult with a duly licensed architect or engineer in the particular locale of the installation to assure compliance with all Legal Requirements. Armstrong is not licensed to provide professional architecture or engineering design services.

PROJECT NAME: TECTUM I OVERHANG DETAIL					
DATE: 10-16-17	SCALE: N.T.S.	PROJECT NO.: XXX			
REV:	DATE:	DESC.: 2010 - TECTUM I OVERHANG DETAIL			SK1 1 OF 1
REV:	DATE:				